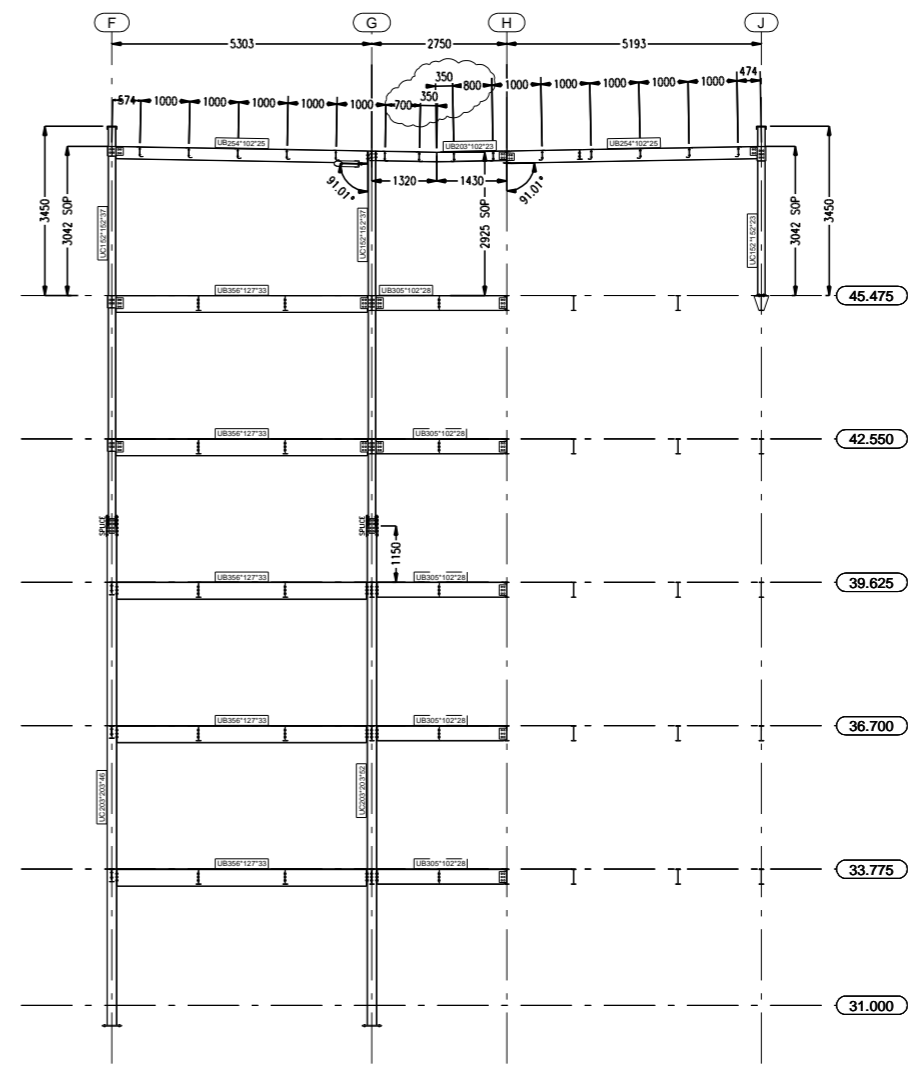
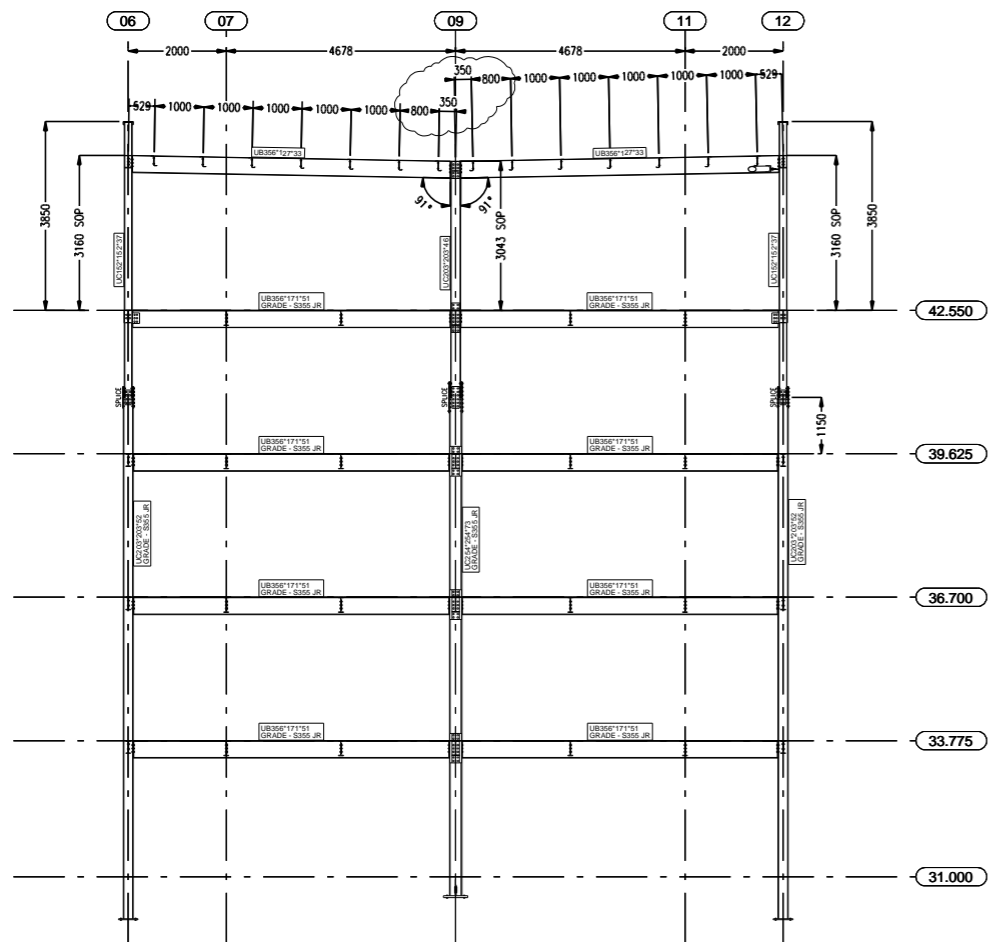


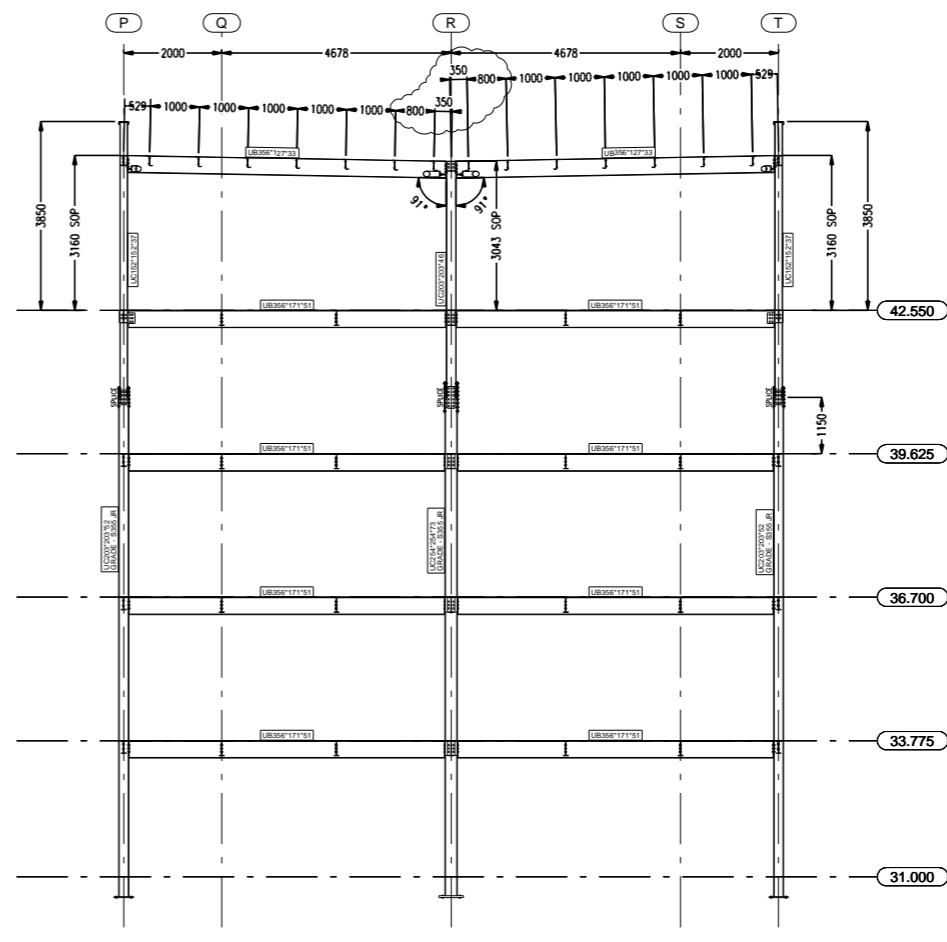
GRID 03



GRID 09



GRID L



GRID 15

ALL HOT ROLLED STEELWORK
TO BE GRADE S275 UNLESS NOTED OTHERWISE

ROBINSON

S. Robinson & Sons (Engineers) Limited
Wincanton Close
Alport Drive
Derby
DE24 8NJ
Telephone: 01332 574711
Fax: 01332 861401
E-Mail: DO@robinsons.com
Web: www.robinsons.com

CLIENT
Opal Property Group

Chettles Yard, Nottingham

TITLE Sections

PROJECT NAME
Chettles Yard Block E

Scale 1:75	Contract No. 9237
Arrangements by D.N.	Drawing No. GA014
Detailed by D.N.	Revision B
Checked by R.C.	Finish SHOT BLAST & PRIME
Date 20.07.2010	Issue Status

Construction Issue

29.07.10 ISSUED FOR CONSTRUCTION
03.08.10 PURLIN SPACING REVISED